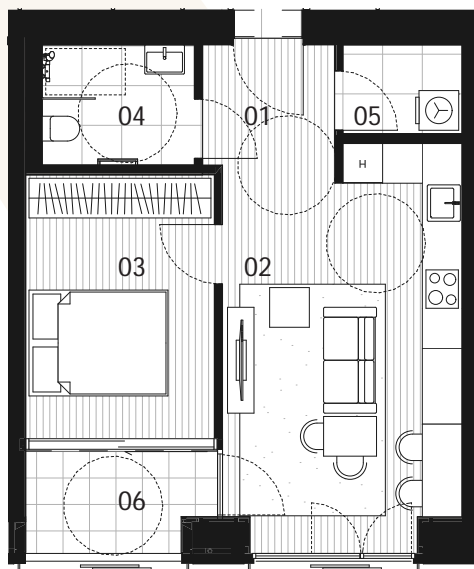


043 / DVOSOBNO STANOVANJE S35

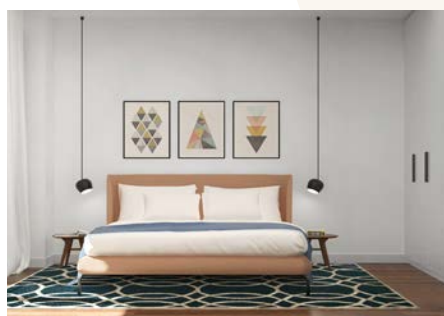
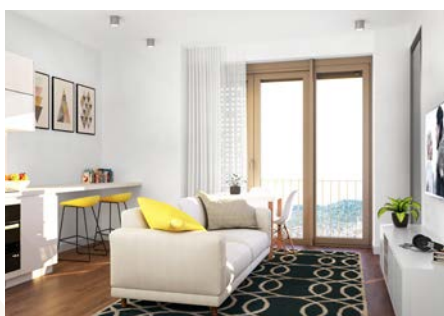
SEVERNI STOLP
3. NADSTROPJE

47,18 m²



| STANOVANJE | | |
|------------|-----------------|----------------------------|
| 01 | PREDPROSTOR | 4,09 |
| 02 | BIVALNI PROSTOR | 20,73 |
| 03 | SPALNICA | 11,36 |
| 04 | KOPALNICA | 4,17 |
| 05 | UTILITY | 2,41 |
| 06 | LOŽA | 4,42 |
| | | 47,18 m² |
| | SHRAMBA | 4,76 m ² |
| | PARKIRNO MESTO | 1 |

Notranja oprema stanovanja je prikazana zgolj informativno.
Investitor si pridržuje pravico do sprememb, ki ne vplivajo na funkcionalnost stanovanja.





vsebina risbe:

Tloris kleti -2

merilo:

1:250



vsebina risbe:

Tloris kleti -3

merilo:

1:250